

BHAWANI INFRACON
**SRI RAM GOVIND
ENCLAVE**

3 BHK LUXURY APARTMENTS

IT'S HOME. IT'S LUXURY.





The Patna based Bhawani Infracon Pvt. Ltd. has been building a legacy of integrity & reliability since 2010 and is India's one among the fastest growing Real-Estate firm. Within a span of 10 years, the company has a huge portfolio that comprises of many successful projects. The firm has brought smiles to thousands of happy families across all corners of Patna and will continue to construct the dreams of many with its massive design. The company has currently upcoming residential projects in and around Patna and has major plans to extend its services all over the major cities in India.

Bhawani Infracon Pvt. Ltd. now brings to you a glorious opportunity to lead a dream lifestyle at "Sri Ram Govind Enclave". A lifestyle backed by the highest standards of construction, design ethics, product quality, luxuries, amenities and facilities.

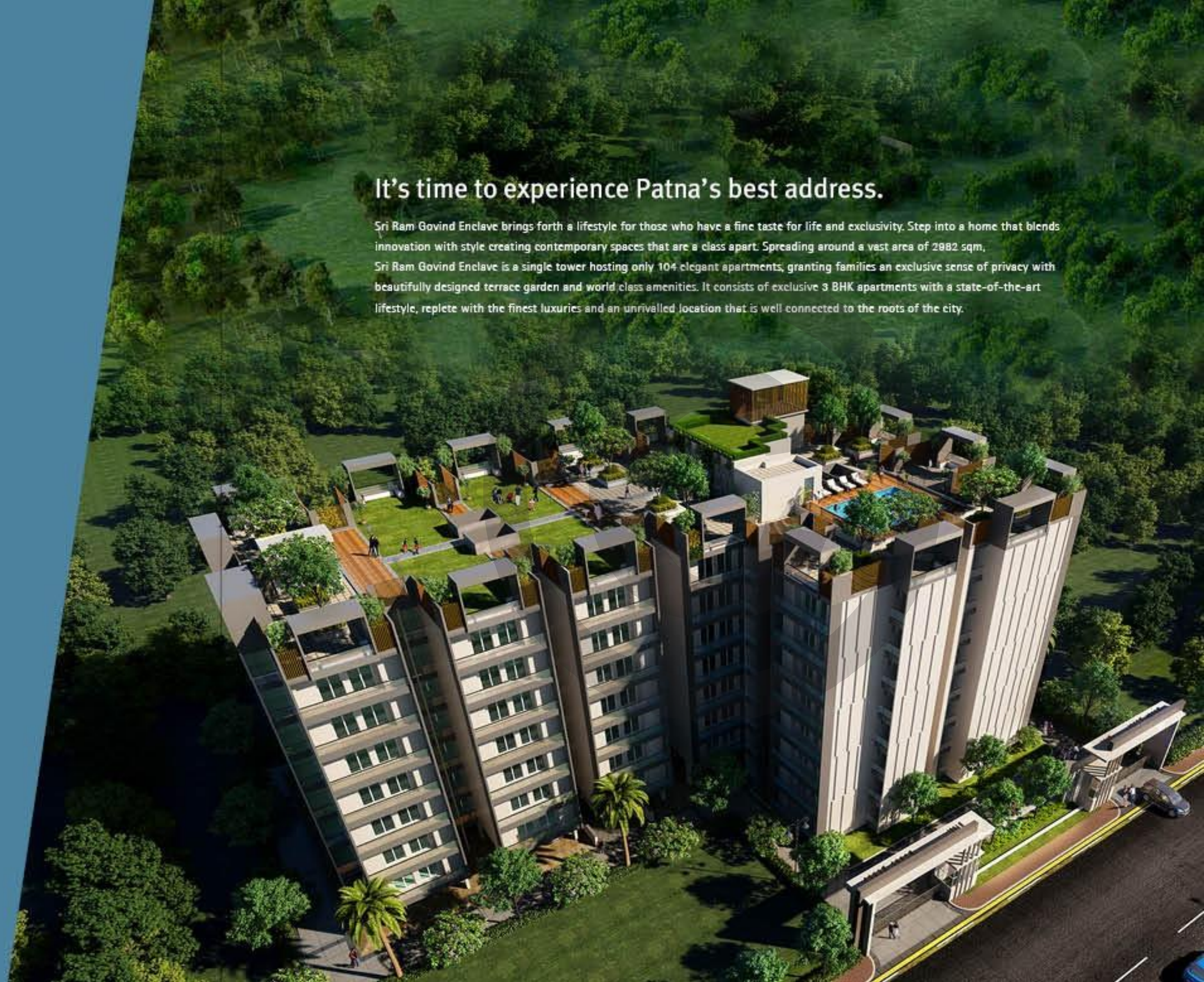
Sri Ram Govind Enclave is a unique project in every sense. Its magnificent architecture, contemporary design, ultra-modern amenities and everything in between offer a lifestyle that has never been imagined before. Located in the heart of Patna city, Sri Ram Govind Enclave is excellently connected with conveniences and thus makes it the most desirable project for the residents of Patna to live life to the fullest and have best value for their money.



*A realm embedded with luxuries.
Coming up to change your views about life and to change the way you live.*

It's time to experience Patna's best address.

Sri Ram Govind Enclave brings forth a lifestyle for those who have a fine taste for life and exclusivity. Step into a home that blends innovation with style creating contemporary spaces that are a class apart. Spreading around a vast area of 2882 sqm, Sri Ram Govind Enclave is a single tower hosting only 104 elegant apartments, granting families an exclusive sense of privacy with beautifully designed terrace garden and world class amenities. It consists of exclusive 3 BHK apartments with a state-of-the-art lifestyle, replete with the finest luxuries and an unrivalled location that is well connected to the roots of the city.





Here, abundance is a way of life.

Matchless location: Sri Ram Govind Enclave is located centrally, connecting its heritage to its bright future thus making it one of the city's most sought-after destinations. The neighbourhood of Sri Ram Govind Enclave has a distinctive character that sets it apart. On one hand, it retains its historical charm; while on the other hand, it keeps up with Patna's fast-paced march towards a brighter tomorrow.

Finest luxuries: Sri Ram Govind Enclave has been planned to provide a life of limitless comfort and convenience. Whether it's indoors or outdoors, every amenity has been designed to make your life more exciting and comfortable. Every apartment will be furnished with the finest luxuries from internationally acclaimed brands.

World-class design: The design of Sri Ram Govind Enclave has gone beyond aesthetics to build a more responsible and efficient way of life. The project has integrated a host of sustainability measures that will be beneficial to you every day.

Modern living in a desired location



With exclusive 3 BHK residences, Sri Ram Govind Enclave is a luxury project for a privileged few. Featuring palatial apartments with terrace garden, exclusive amenities and excellent connectivity - stand out from the crowd at Sri Ram Govind Enclave. It is an exclusive gated community with only 7 floors and 104 residences enjoy the utmost privacy with your loved ones.

A spacious and elegantly planned living area which opens up in two directions with massive edge to edge windows allowing you to soak in gorgeous views of the city will be the venue for many happy occasions with your friend and family.





Intelligent design of living spaces

The beautifully designed bedrooms will be home to numerous cherished memories with your loved ones. The unique column less design of every room at Sri Ram Govind Enclave means that not only does the space feel incredibly large; you can also do so much more with the space.



Every attribute of interiors at Sri Ram Govind Enclave, is positioned in a way that proves proficient and functional. You enjoy optimum utilisation of space in every inch. Draped in leading lifestyle and home decor brands, open up to an eye-pleasing view even indoors. Adorned with the finest of finishes, every tile, every fixture and every space at Sri Ram Govind Enclave has been carefully selected and spells luxury.

Image for representation purpose only.

SRI RAM GOVIND ENCLAVE



When Urban Meets Natural

The terrace garden is a great appealing addition to our modern apartment where you relax in the lap of nature whenever you want. It also decreases the heat absorption by buildings and acts as padding from heat and cold.



SHAWANI INTERACON
SRI RAM GOVIND
ENCLAVE



**Image for representation purpose only.*

An aesthetic and luxurious terrace garden completes the experience of luxury at Sri Ram Govind Enclave- both indoors and outdoors. A fine piece of luxury on the 7th floor, the terrace garden lets you put your feet up and indulge in extravagant comforts. Who said you have to go out for leisure, at Sri Ram Govind Enclave, you go to the top.

Discover the Masterchef in you.

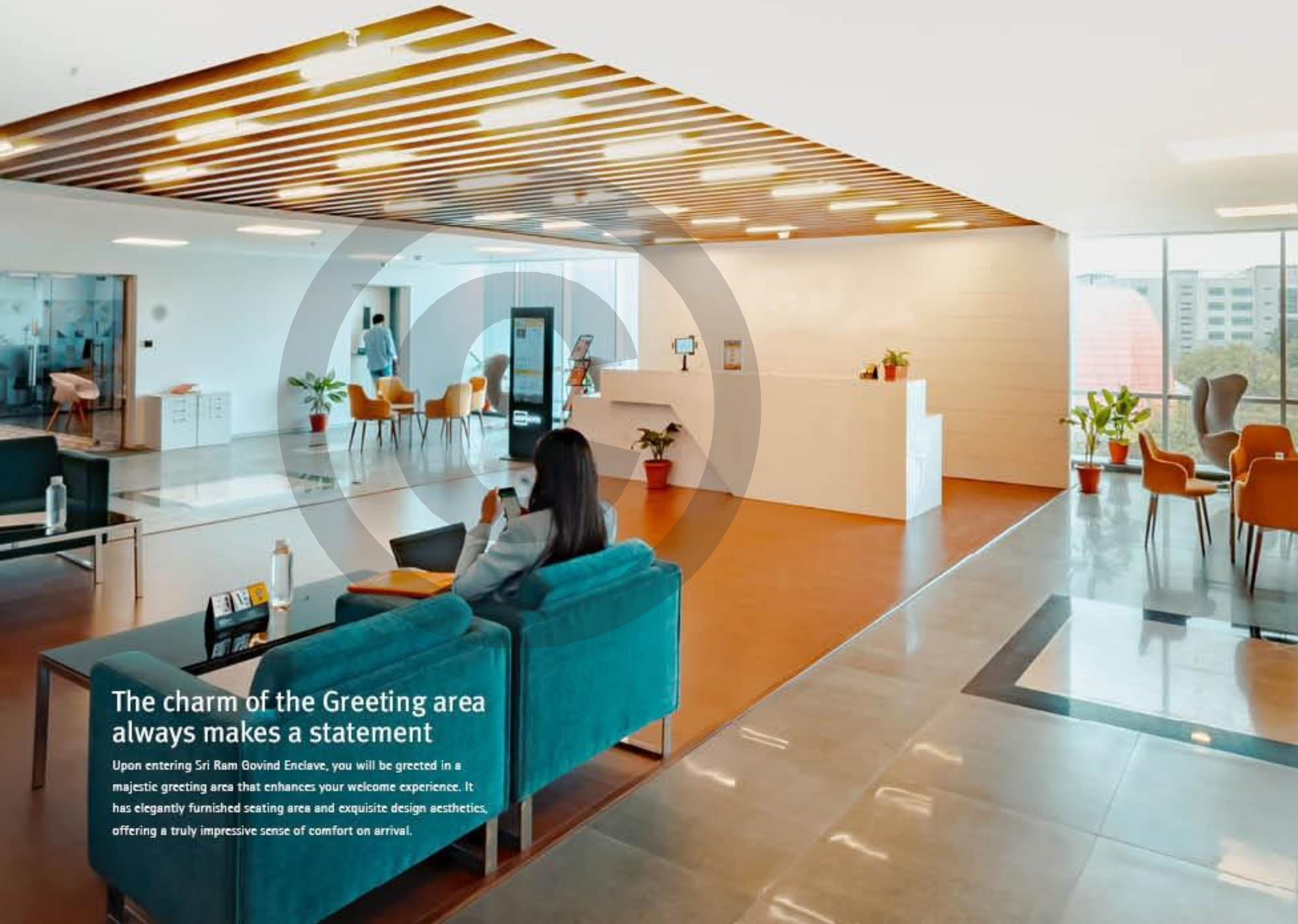
Sleek, inviting and warm modern layout, perfect for the master chef in you.

Image for representation purpose only.



After breathing, eating is one thing we all do. In fact, we love eating. So, we decided to come up with a cooking space that would showcase your love for food. You can take your culinary skill to a whole new level in the enormous kitchen at Sri Ram Govind Enclave which features plenty of counter and storage space.





The charm of the Greeting area always makes a statement

Upon entering Sri Ram Govind Enclave, you will be greeted in a majestic greeting area that enhances your welcome experience. It has elegantly furnished seating area and exquisite design aesthetics, offering a truly impressive sense of comfort on arrival.



Sri Ram Govind Enclave provides all the amenities one would expect in a residence with an extraordinary level of quality – an array of social, wellness and recreational facilities which contribute to the appeal of a leisurely lifestyle. We believe that a fit body and mind is all you need to face any tough situations. Our hi-tech, air-conditioned gym have been designed just for one purpose– to give you a fitter body and active life. We also provide ample parking space so that your car gets its perfect place.

At Sri Ram Govind Enclave, we push the envelope to make sure that you have the best protection available on all fronts. We provide high quality cutting edge security system ensuring the safety of you and your family 24 hours a day, 7 days a week.

Enjoy every moment of celebrations and the applause!

Sri Ram Govind Enclave provides the perfect stage to celebrate momentous occasions and to show off your talents. Amidst the soothing backdrop, you can sing, dance and raise a toast to the memorable moments in your life.



Affluent Neighbourhood that keeps you Connected to the entire city

Anisabad is a vibrant neighbourhood, located in the heart of Patna. Over the last few years Anisabad has witnessed rapid growth owing to excellent connectivity, robust social infrastructure and upcoming infrastructural initiatives. With easy access to several high-profile locations of the city, such as AIIMS Patna, Airport and railway station, getting there will never be a hassle. With prominent schools, colleges, supermarkets, and entertainment destinations in close proximity, Sri Ram Govind Enclave offers the best of connectivity with every need of modern urban living.

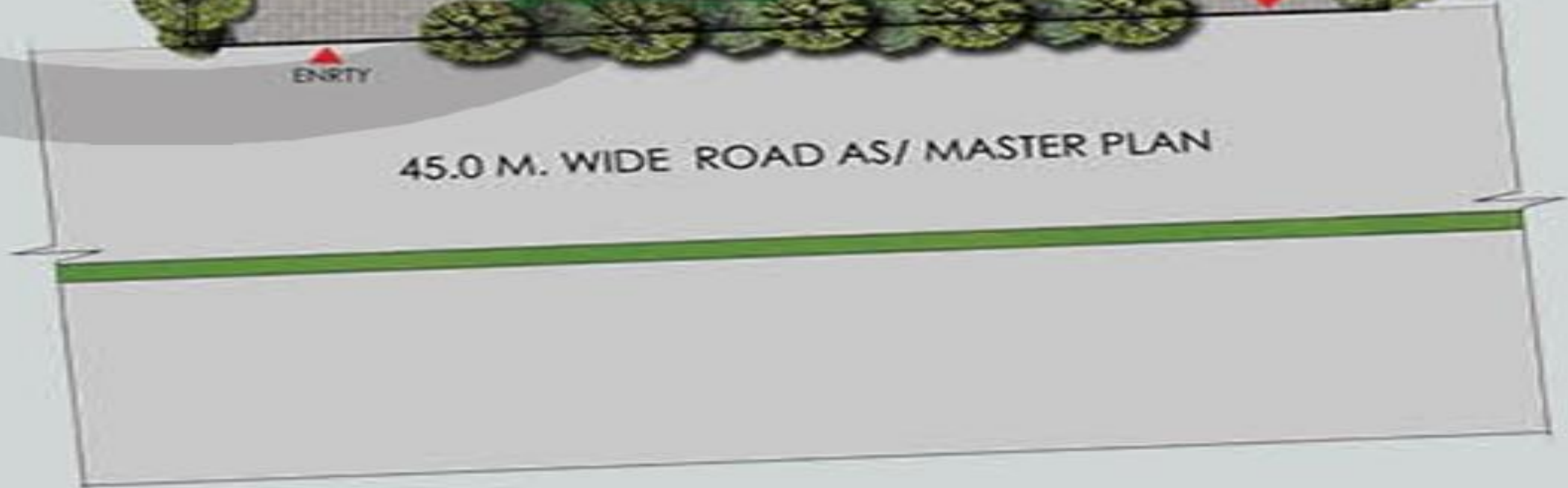


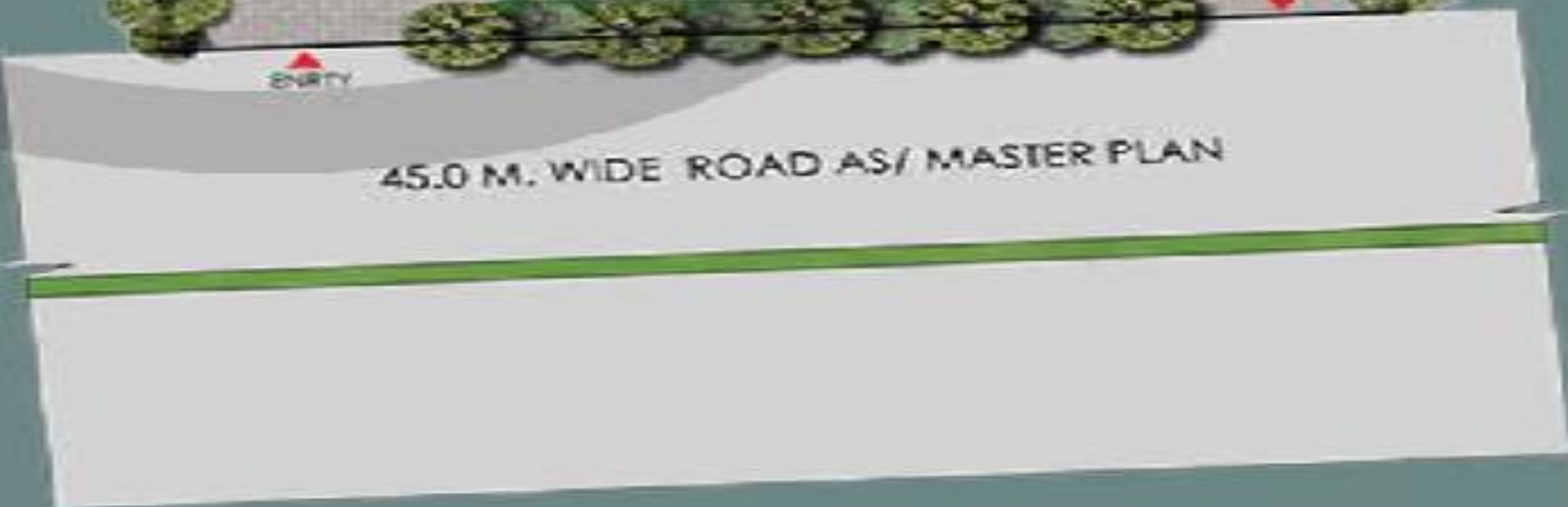
Every good designs begins with a better story

Your home is something that you wait for years... something that you cherish for a lifetime... something that reflects you... and something that you can never compromise on!



SITE PLAN (TYPICAL LEVEL)

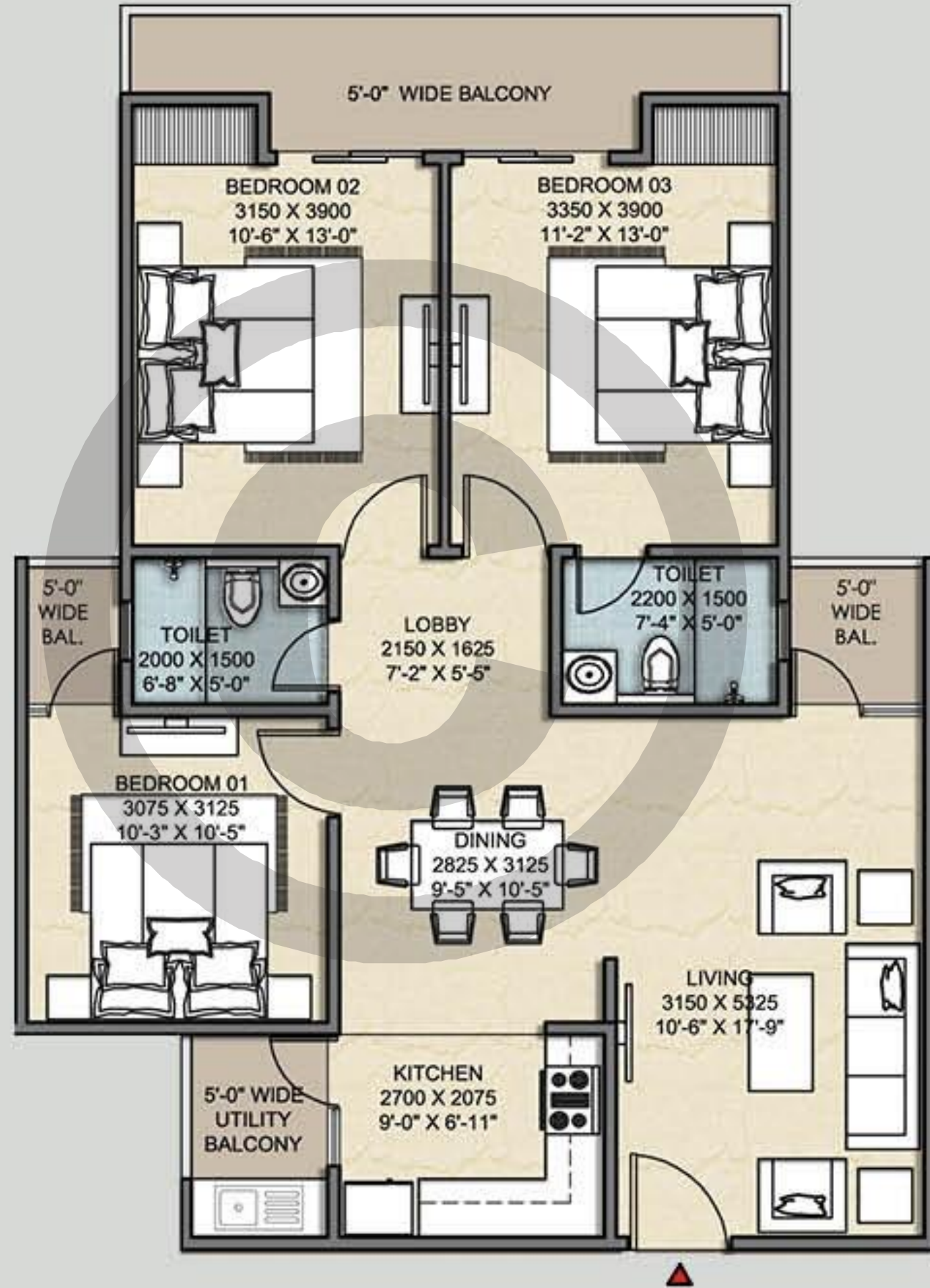




TERRACE
LEVEL PLAN

UNIT PLAN

TYPE 01
3BHK + 2T

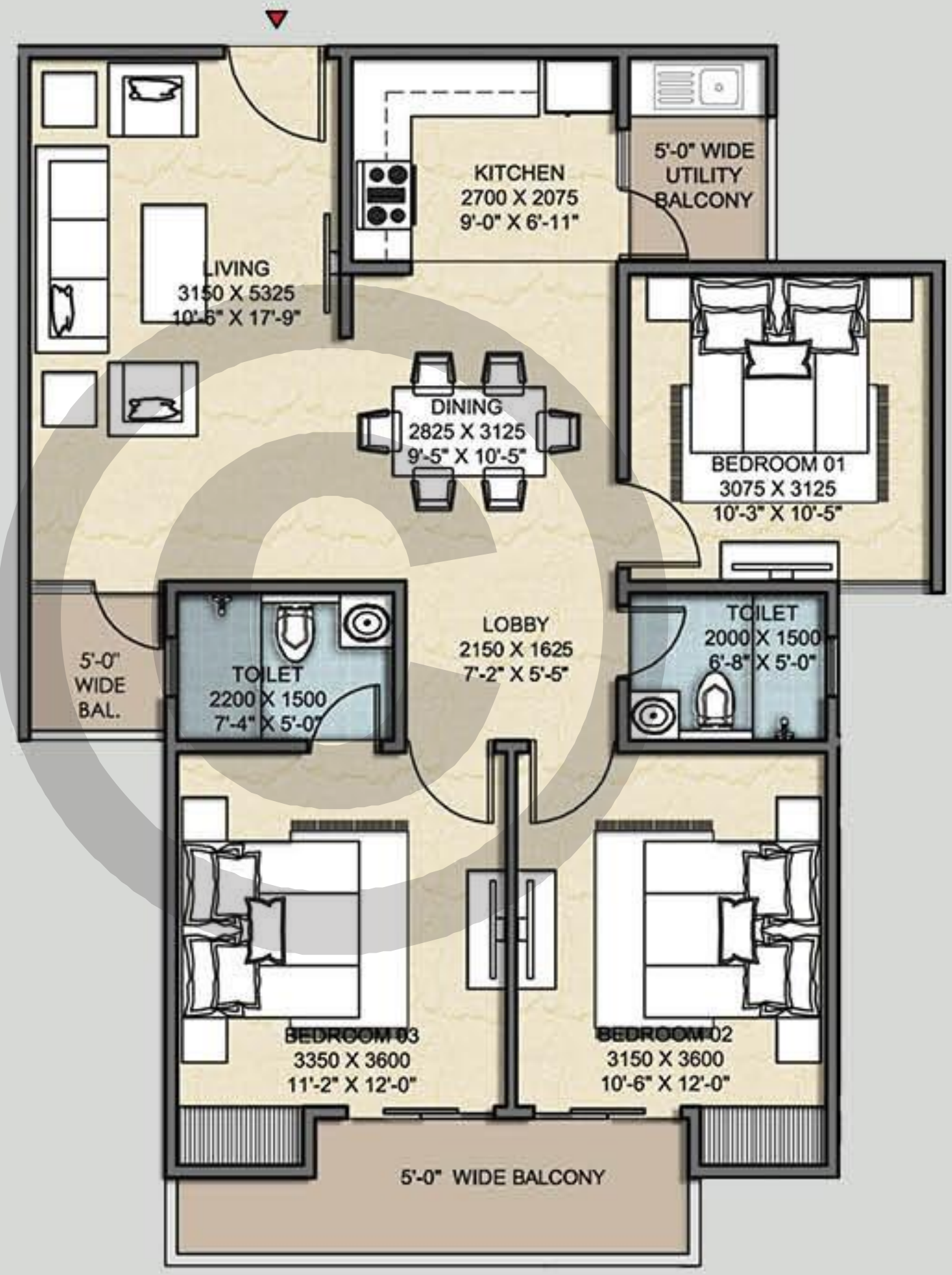


- 3 BEDROOMS
- LIVING AND DINING
- KITCHEN
- 3 BALCONIES
- 2 TOILETS
- UTILITY SPACE



UNIT PLAN

TYPE 03
3BHK + 2T

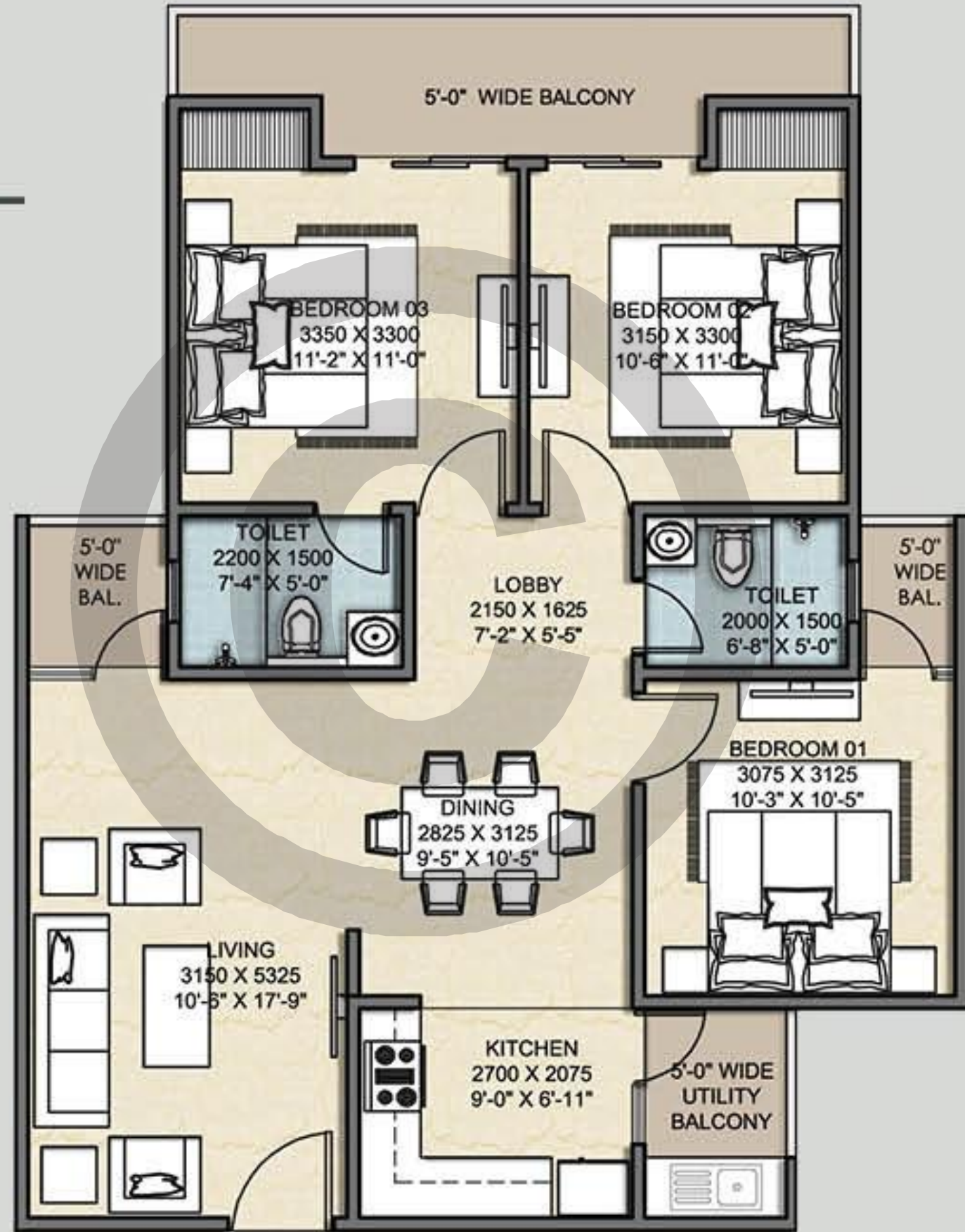


- 3 BEDROOMS
- LIVING AND DINING
- KITCHEN
- 2 BALCONIES
- 2 TOILETS
- UTILITY SPACE



UNIT PLAN

TYPE 04
3BHK + 2T

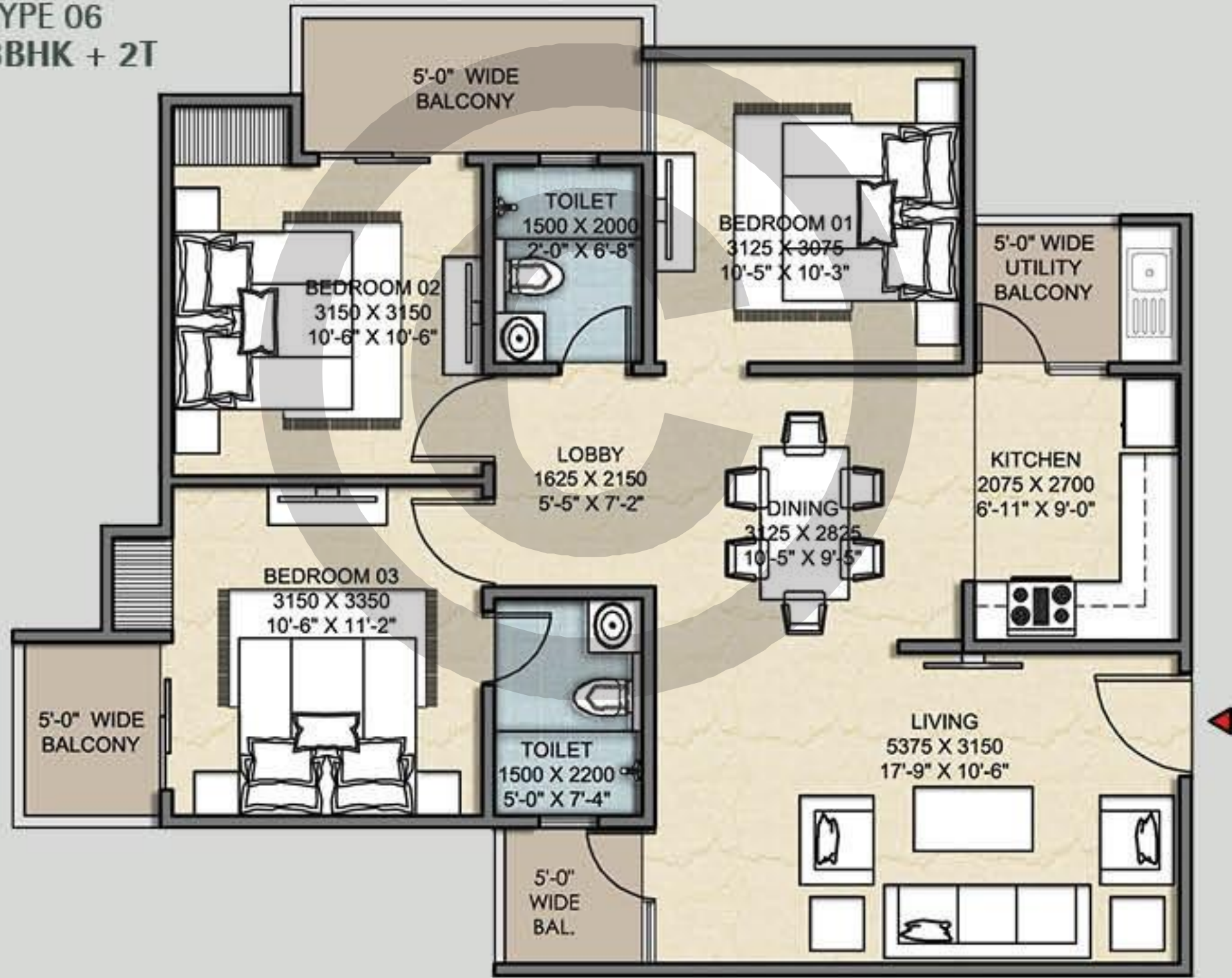


- 3 BEDROOMS
- LIVING AND DINING
- KITCHEN
- 3 BALCONIES
- 2 TOILETS
- UTILITY SPACE



UNIT PLAN

TYPE 06
3BHK + 2T



- 3 BEDROOMS
- LIVING AND DINING
- KITCHEN
- 3 BALCONIES
- 2 TOILETS
- UTILITY SPACE



We have rich history of innovation, quality & transparency

COMFORT FOUNDED ON RICH SPECIFICATIONS STRUCTURE

- Earthquake resistant R.C.C. frame structure with R.C.C. shear Walls.
- CLC Blocks / Fly ash bricks for brick masonry for an energy efficient building.

PAINTING

- Oil Bound Distemper on all walls & ceiling of Asian/Berger or equivalent make.

EXTERIOR

- Texture paint of Aero/Sheelmar paints.
- Glass railing with powder coated M.S Handrail.

FLOORING

- Vitrified Wooden Planks tile in master bedroom of Kajaria/Somany/Johnson or equivalent make.
- 80 X 80/60 X 60 Vitrified tile Flooring in Drawing/Dining and other bedrooms of Kajaria/Somany/Johnson or equivalent make.
- Anti-Skid floor tiles of Kajaria/Somany or equivalent make in Toilets and Balconies.
- Full height Glezed/Ceramic Tiles in Toilets of Kajaria/Somany or equivalent make.

KITCHEN

Complete modular kitchen with all fittings & accessories including Granite Slab Counter, R.O for purified water, Chimney of Kaff/Faber or equivalent make, 2 burner HOB of ISI certified brand, Stainless Steel sink with drainboard of Nirali or equivalent make alongwith glazed tiles 2ft above counter of Kajaria/Somany/Johnson or equivalent make.

DOOR & WINDOWS

- Safety Door of TATA make for main entrance door of the flat.
- All balcony openings to be UPVC door & windows of international make.
- Flush doors for all internal doors with laminate on both sides.
- All door hardware to be of Godrej/Doorset or equivalent make.

BATHROOMS

- Equipped with Jaguar/Kohler/ Hindware or equivalent make washbasins and WCs. CP Fittings of Jaguar/Kohler/Grohe or equivalent make.

ELECTRICAL

- Electrical (copper) wiring as per ISI code with Modular switches of Anchor/Wipro or equivalent make.
- Circuits with MCB of approved make AS PER ISI code. TV and Telephone/Intercom points in every room.

Disclaimer: Marble / granite being natural materials have inherent characteristics of color and grain variations. Specifications are indicative and are subject to change as decided by the Company or Competent Authority. Marginal variations may be necessary during construction. The brands of the equipments / appliances are tentative and liable to change at the sole discretion of the Company. Applicant / Allottee shall not have any right to raise objections in this regard. Areas and plans are subject to changes following detail design of services.

Payment Plan

DOWN PAYMENT PLAN

| | |
|----------------------------|-----|
| At the time of booking | 10% |
| Within 7 days of agreement | 85% |
| At offer of possession | 5% |

CONSTRUCTION LINKED PLAN

| | |
|-----------------------------|-----|
| At the time of booking | 10% |
| Within 7 days of agreement | 25% |
| At casting of first floor | 15% |
| At casting of third floor | 10% |
| At casting of fifth floor | 10% |
| At casting of seventh floor | 15% |
| At brick work | 5% |
| At external plaster | 5% |
| At offer of possession | 5% |



*Image for representation purpose only



Concept, Design & Printed by www.sikra.live.com | 991 081891

BHAWANI INFRACON

SRI RAM GOVIND ENCLAVE

3 BHK LUXURY APARTMENTS

Bhawani Infracon Pvt. Ltd.

305, 3rd Floor, Kaushalya Estate, Dak Banglow Road, Patna - 800001
t: 0612-2204211 | e: info@bhawaniinfracon.com